

GROWTH PLAN FOR THE GREATER GOLDEN HORSESHOE

WHAT IS THE GROWTH PLAN?

The Minister of Public Infrastructure Renewal released the final *Growth Plan for the Greater Golden Horseshoe* in June 2006. The *Growth Plan* outlines a set of policies for managing growth and guiding planning decisions in the Greater Golden Horseshoe (GGH) over the next 25 years. The Plan also sets out, in concert with other provincial plans and the Provincial Policy Statement, the provincial policies and strategic directions for transit and transportation to create a sustainable, integrated transportation system to meet a more sustainable future. Planning decisions made by the Province, municipalities and other authorities are now required to conform to the *Growth Plan*.

The *Growth Plan* aims to:

- Revitalize downtowns to become vibrant and convenient centres.
- Create complete communities that offer more options for living, working, learning, shopping and playing.
- Provide housing options to meet the needs of people at any age.
- Curb sprawl and protect farmland and green spaces.
- Reduce traffic gridlock by improving access to a greater range of transportation options.

TRANSPORTATION POLICIES IN THE GROWTH PLAN

The *Growth Plan* provides a strategic framework for future transportation investment decisions in the GGH, which includes a need for future transportation corridors between *Urban Growth Centres*, including those in the GTA West Corridor Preliminary Study Area. The Plan envisions that the GGH transportation system will:

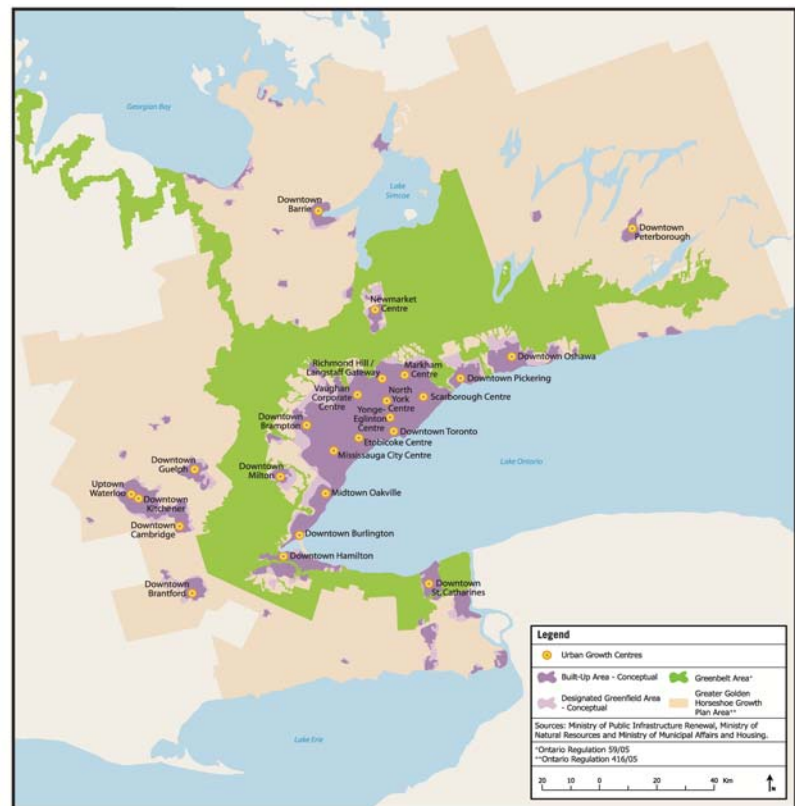
- **Provide connectivity** among transportation modes
- Offer a **balance of transportation choices** to promote sustainable modes
- Be **sustainable** by encouraging the most financially and environmentally appropriate mode
- Offer **multi-modal** access to everyday needs
- Provide for the **safety** of system users

The *Growth Plan* also indicates that the details of actual timing, phasing, and alignments will be, where applicable, determined by further study and the environmental assessment process.

Why is this document important to the study?

The *Growth Plan for the Greater Golden Horseshoe* guides all transportation planning and investment decisions including the GTA West Corridor EA Study that will connect *Urban Growth Centres* and provide efficient movement of people and goods.

SCHEDULE 4 – URBAN GROWTH CENTRES



Ontario

PLACES TO GROW

GROWTH PLAN FOR THE GREATER GOLDEN HORSESHOE 2006

SCHEDULE 4

Urban Growth Centres

Note: The information displayed on this map is not to scale, does not accurately reflect approved land-use and planning boundaries, and may be out of date. For more information on precise boundaries, the appropriate municipality should be consulted. For more information on Greenbelt Area boundaries, the Greenbelt Plan 2005 should be consulted. The Province of Ontario assumes no responsibility or liability for any consequences of any use made of this map.

GROWTH PLAN FOR THE GREATER GOLDEN HORSESHOE

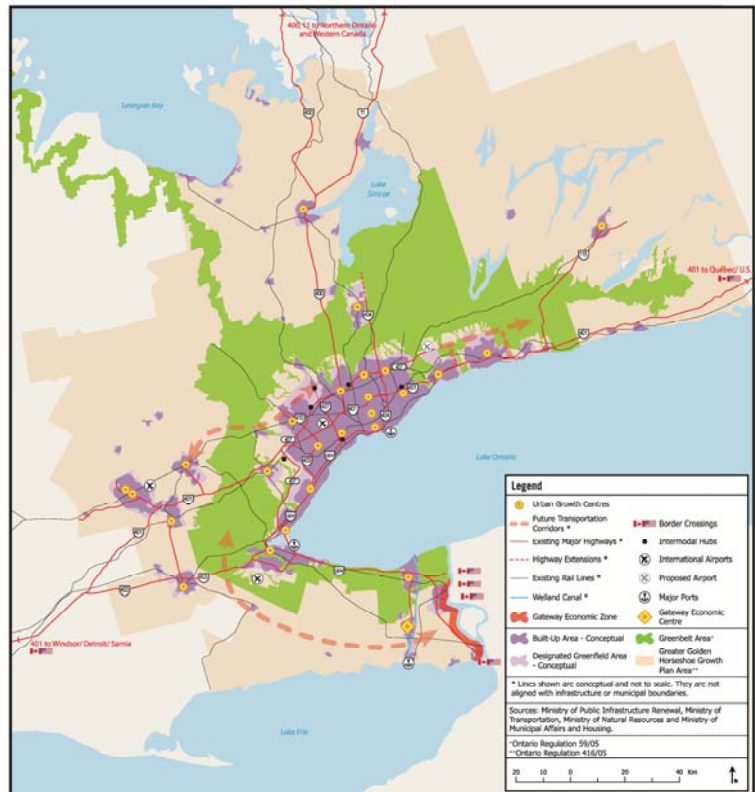
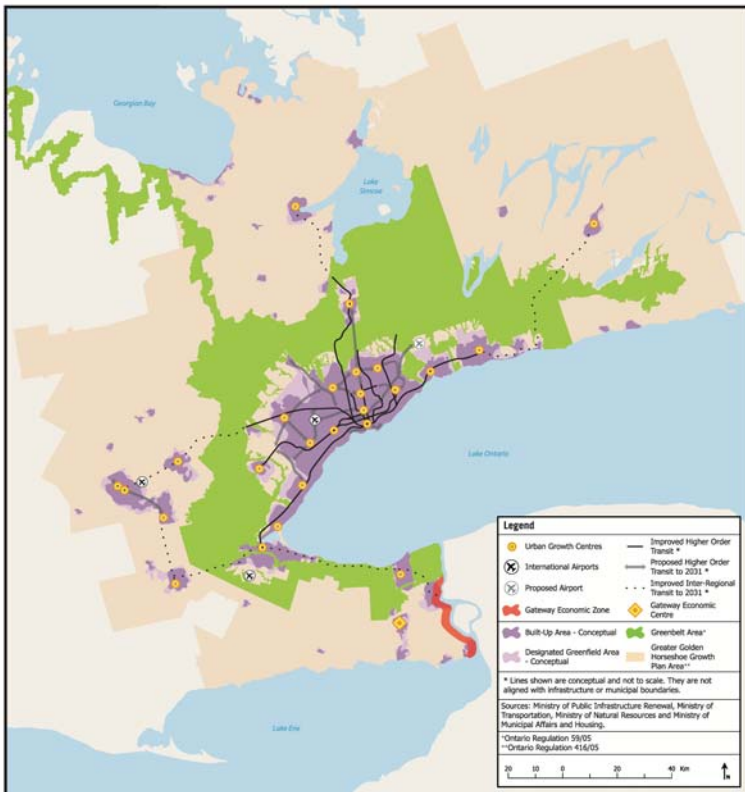
SCHEDULE 5 – MOVING PEOPLE

Public transit will be the first priority for transportation infrastructure planning and major transportation investments.

SCHEDULE 6 – MOVING GOODS

The first priority of highway investment is to facilitate efficient goods movement by linking inter-modal facilities, international gateways, and communities within the Greater Golden Horseshoe (GGH).

The planning and design of highway corridors, and the land use designations along these corridors, will support the policies of this Plan.



Ontario
PLACES TO GROW
GROWTH PLAN FOR THE GREATER GOLDEN HORSESHOE, 2008

SCHEDULE 5
Moving People – Transit

Note: The information displayed on this map is not to scale, does not accurately reflect approved land-use and planning boundaries, and may be out of date. For more information on precise boundaries, the appropriate municipality should be consulted. For more information on Greenbelt Area boundaries, the Greenbelt Plan 2005 should be consulted. The Province of Ontario assumes no responsibility or liability for any consequences of any use made of this map.

Ontario
PLACES TO GROW
GROWTH PLAN FOR THE GREATER GOLDEN HORSESHOE, 2008

SCHEDULE 6
Moving Goods

Note: The information displayed on this map is not to scale, does not accurately reflect approved land-use and planning boundaries, and may be out of date. For more information on precise boundaries, the appropriate municipality should be consulted. For more information on Greenbelt Area boundaries, the Greenbelt Plan 2005 should be consulted. The Province of Ontario assumes no responsibility or liability for any consequences of any use made of this map.

For information on the *Growth Plan for the Greater Golden Horseshoe*, please visit the Places to Grow website at:
<http://www.placestogrow.ca/index.php?lang=eng>

Contact Information
GTA West Project Team
www.gta-west.com
Email: project_team@gta-west.com