



Session 2:
Trade-Offs in the West Section of the
Study Area



PURPOSE

- Review the key issues and trade-offs the project team has identified in the west section of the GTA West study area
- Obtain your input on the key issues and trade-offs

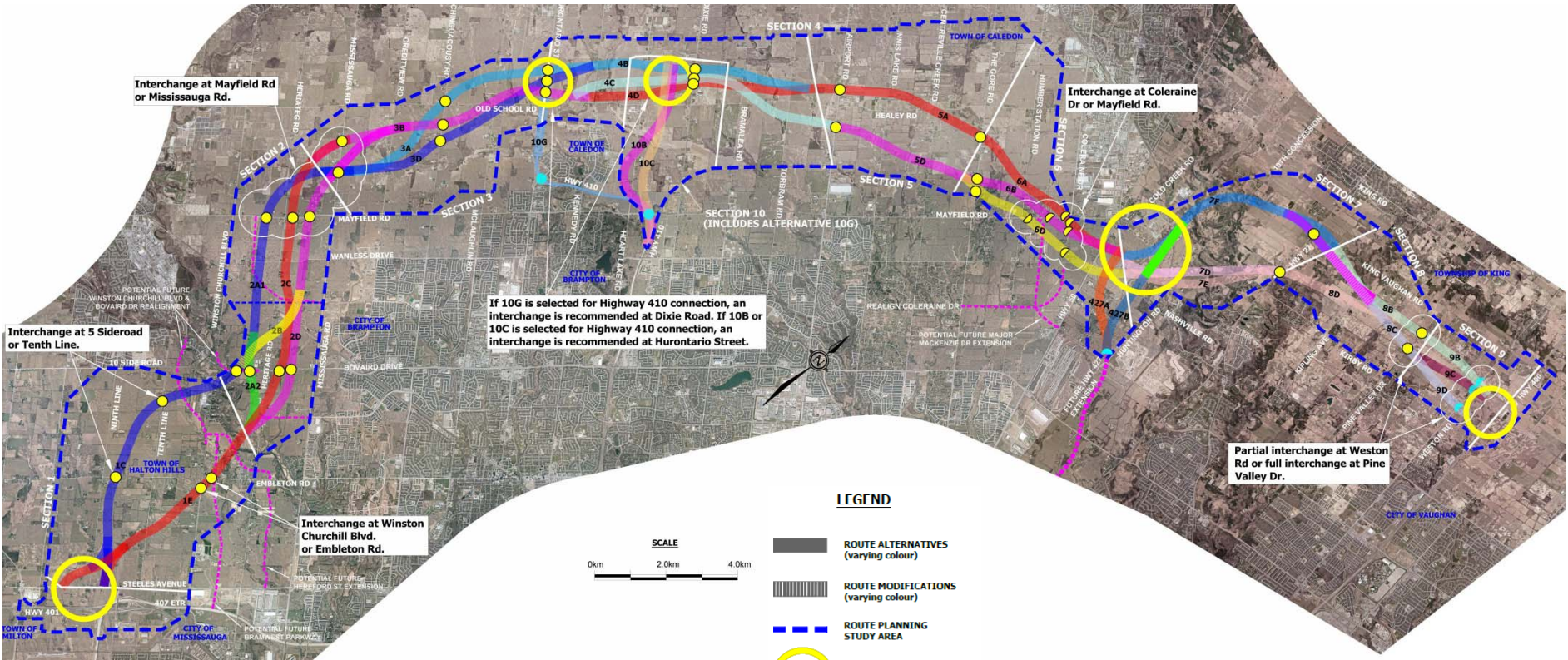




GTA West

Planning with Vision | Planning for People

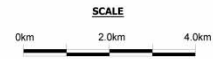
REFINED SHORT LIST OF ROUTE ALTERNATIVES AND POTENTIAL INTERCHANGE LOCATIONS



If 10G is selected for Highway 410 connection, an interchange is recommended at Dixie Road. If 10B or 10C is selected for Highway 410 connection, an interchange is recommended at Hurontario Street.

LEGEND

- ROUTE ALTERNATIVES (varying colour)
- ROUTE MODIFICATIONS (varying colour)
- ROUTE PLANNING STUDY AREA
- FREEWAY-TO-FREEWAY INTERCHANGE
- / PRIMARY PARTIAL OR FULL INTERCHANGE (TO MEET PROVINCIAL NEEDS)
- / OTHER OPPORTUNITIES FOR PARTIAL INTERCHANGES OR INTERCHANGE MODIFICATIONS (INTRODUCED AFTER PIC #1)

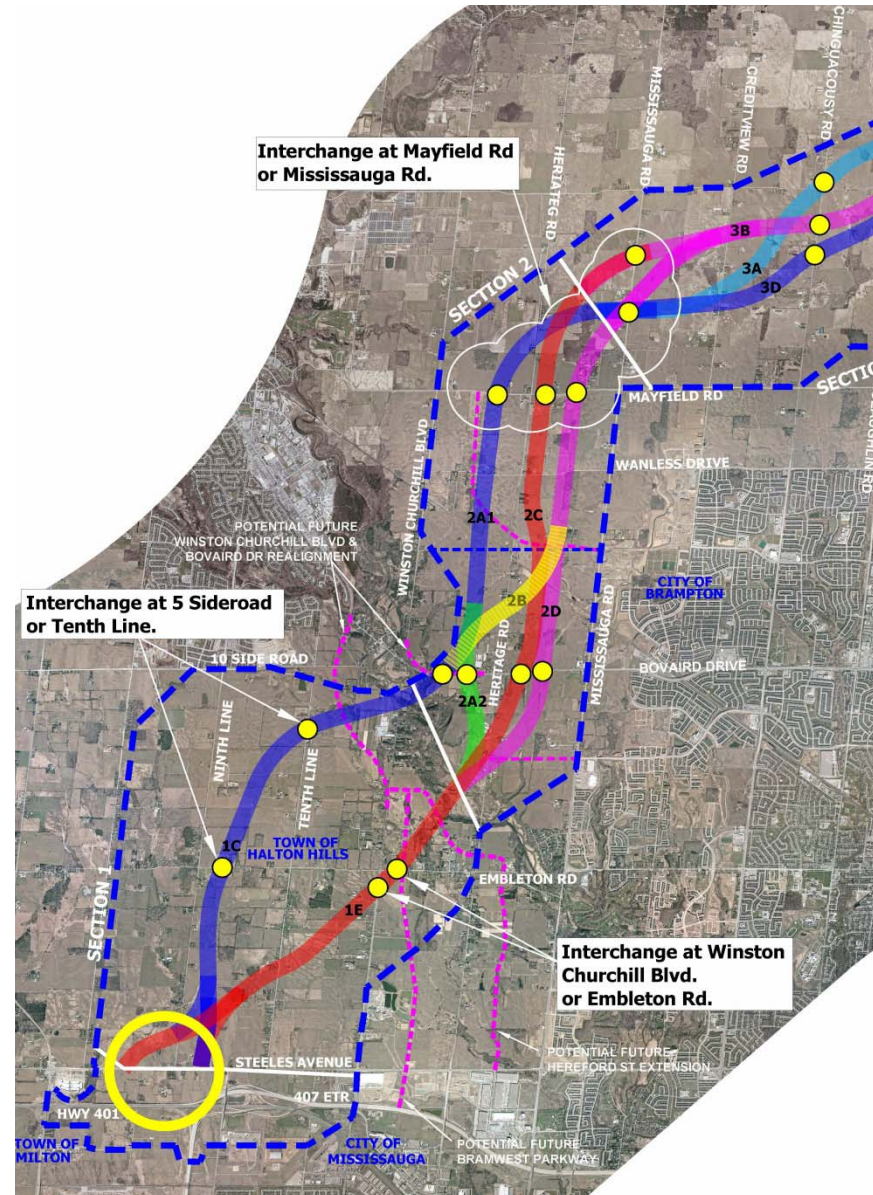


NOTE: POTENTIAL INTERCHANGE LOCATIONS BEING REFINED THROUGH MUNICIPAL INPUT NOW UNDERWAY

SHORT LIST OF ROUTE ALTERNATIVES AND POTENTIAL INTERCHANGE LOCATIONS

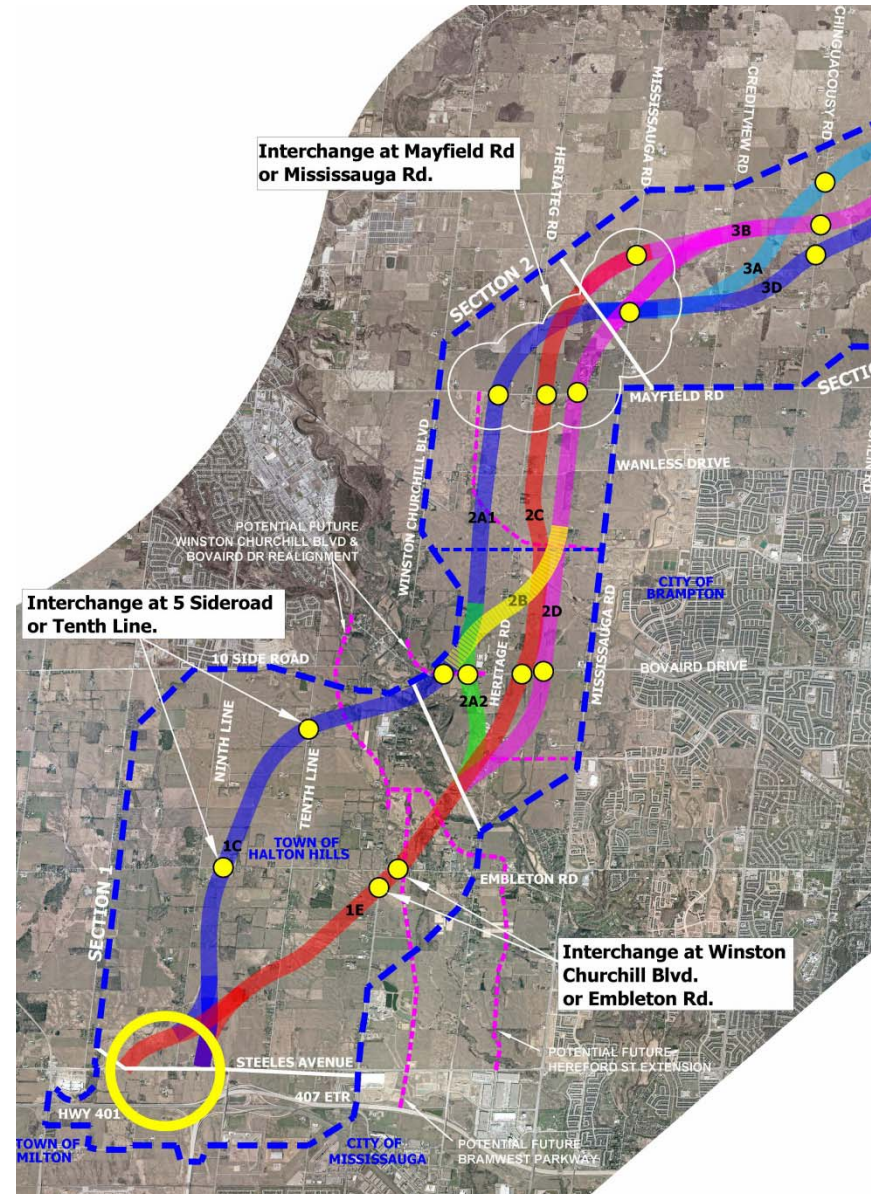
WEST SECTION

NOTE: POTENTIAL INTERCHANGE
LOCATIONS BEING REFINED THROUGH
MUNICIPAL INPUT NOW UNDERWAY



EXAMPLES OF TRADE-OFFS

- North vs. south crossing of Credit River
 - Residences, religious institutions, natural environment, proximity to Norval, compatibility with future municipal road network
- Interchange options
 - Land use impacts, access issues, TransCanada Pipeline crossing, compatibility with future municipal road network
- East vs. west of Heritage Road
 - Religious institutions, planned cemetery, Heritage Heights concept plan and landowners, natural environment





FACILITATED GROUP DISCUSSION

FACILITATED GROUP DISCUSSION – WEST SECTION

1. Do you prefer a northerly or southerly crossing of the Credit River and why?
2. Do you prefer an interchange at Mississauga Road or Mayfield Road and why?
3. Do you prefer the easterly or westerly routes through the Heritage Heights area and why?