

The Highway 413 and Transit Corridor Route Planning, Preliminary Design and Environmental Assessment Project is focusing on the planning and preliminary design of a new multimodal transportation corridor that includes a 400-series highway, transitway, and potential goods movement priority features. Public Information Centre #2 (PIC #2), held in September/October 2019, presented the draft Technically Preferred Route and draft 2019 Focused Analysis Area for comment.

The draft Technically Preferred Route presented at PIC #2 has been superseded by the Preferred Route. **The Preferred Route** map illustrates the route and interchange locations for the Highway 413 and transit corridor that will be developed to a preliminary design level of detail over the next 2 years. The Preferred Route map provides information on where changes have been made to the route based on the consideration of feedback from PIC #2, land use and environmental information.

TIMELINE

WINTER 2019 - SUMMER 2020

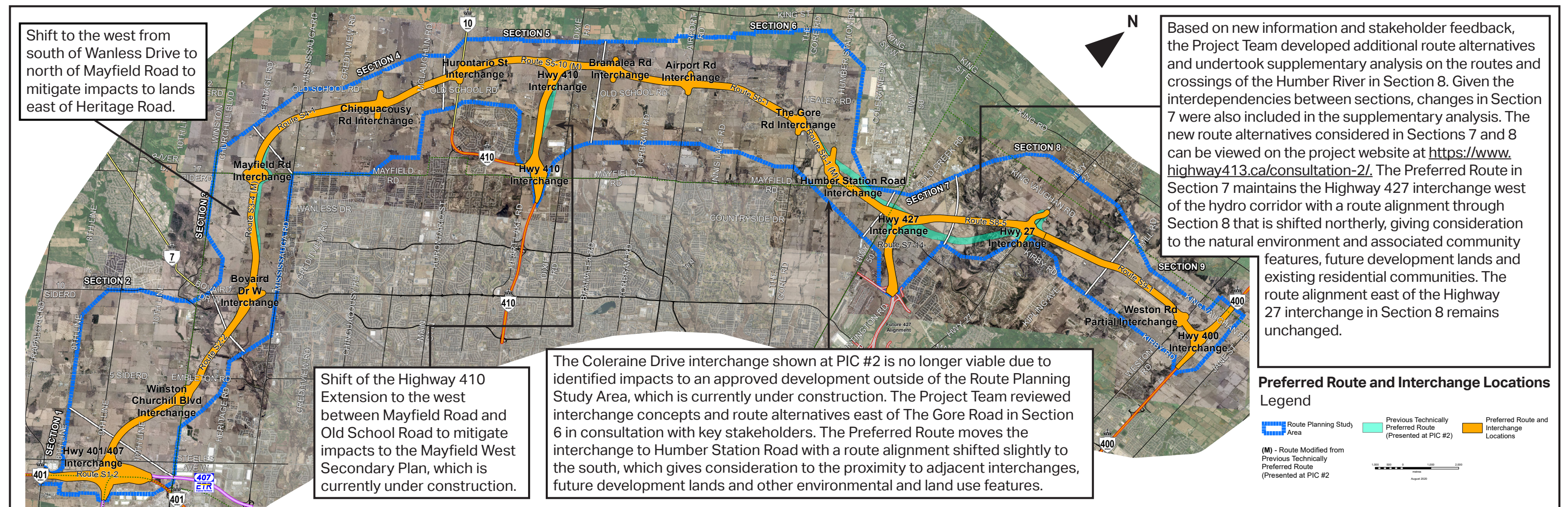
The Project Team reviewed feedback from PIC #2 and worked diligently with advisory groups, municipal staff, agencies and other stakeholders to confirm the Preferred Route and associated 2020 Focused Analysis Area for the Highway 413 and transit corridor.

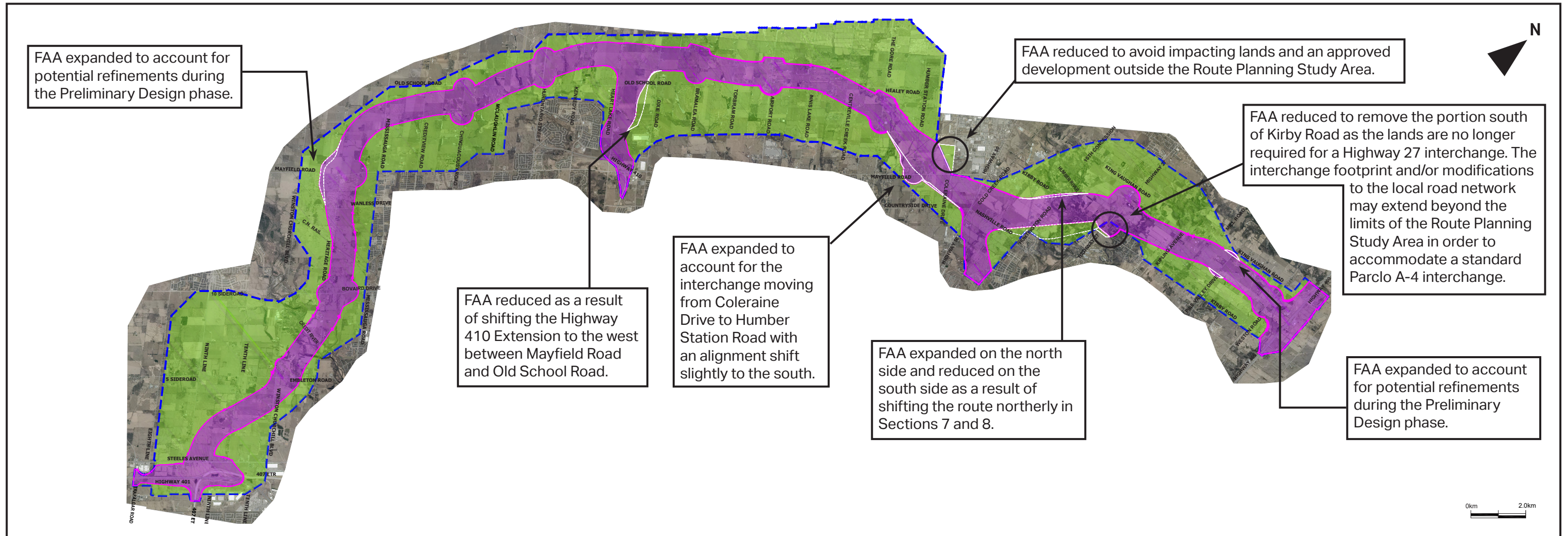
2020 - 2023

The Project Team is undertaking fieldwork on properties potentially impacted by the Preferred Route to document existing environmental and engineering conditions.

2020 - 2023

The Project Team will continue to develop the preliminary design and investigate opportunities for refinement as results of the fieldwork is received. Future consultation activities will present the preliminary design, including property impacts and mitigation measures, for public review and comment.





Purple Area

The 2019 Focused Analysis Area (FAA) that was presented at PIC #2 was in draft format and has since been refined following a review of feedback and other relevant data. The refined 2020 FAA (purple area) is a zone that surrounds the Preferred Route and defines which properties continue to be within an area of interest as the study progresses. Properties located within the 2020 FAA could be directly impacted by the Highway 413 and transit corridor, ancillary uses, or if refinements are made to the route during the preliminary design stage.

More Information

You can download detailed mapping of the Preferred Route and 2020 FAA from the Public Information Centre #2 section of the project website at <https://www.highway413.ca/consultation-2/>.
 Ce bulletin peut être téléchargé en français sur le site Internet du projet à l'adresse <https://www.highway413.ca/accueil/>.
 Des renseignements sont disponibles en français en composant (289) 835-2484 (Yannick Garnier).

Green Areas

MTO has a reduced interest in properties located in the green areas on the map. Applications can proceed through municipal development processes and MTO will continue to review all development applications in the study area, but it is anticipated that applications in the green areas will not be impacted by the Highway 413 and transit corridor. The Project Team aims to further reduce the FAA as the preliminary design is advanced.

Route Planning Study Area - - - - -

Geographical area within which alternatives for the Highway 413 and transit corridor were considered.

WEBSITE		www.highway413.ca
EMAIL		project_team@highway413.ca
TOLL-FREE		1-877-522-6916